

# MSCDN – MP2A

Capacitor unbalance protection

## Document Release History

This document is issue 2010/02. The list of revisions up to and including this issue is:  
Pre release

2010/02	Document reformat due to rebrand
11/02/2003	R1 First version

## Software Revision History

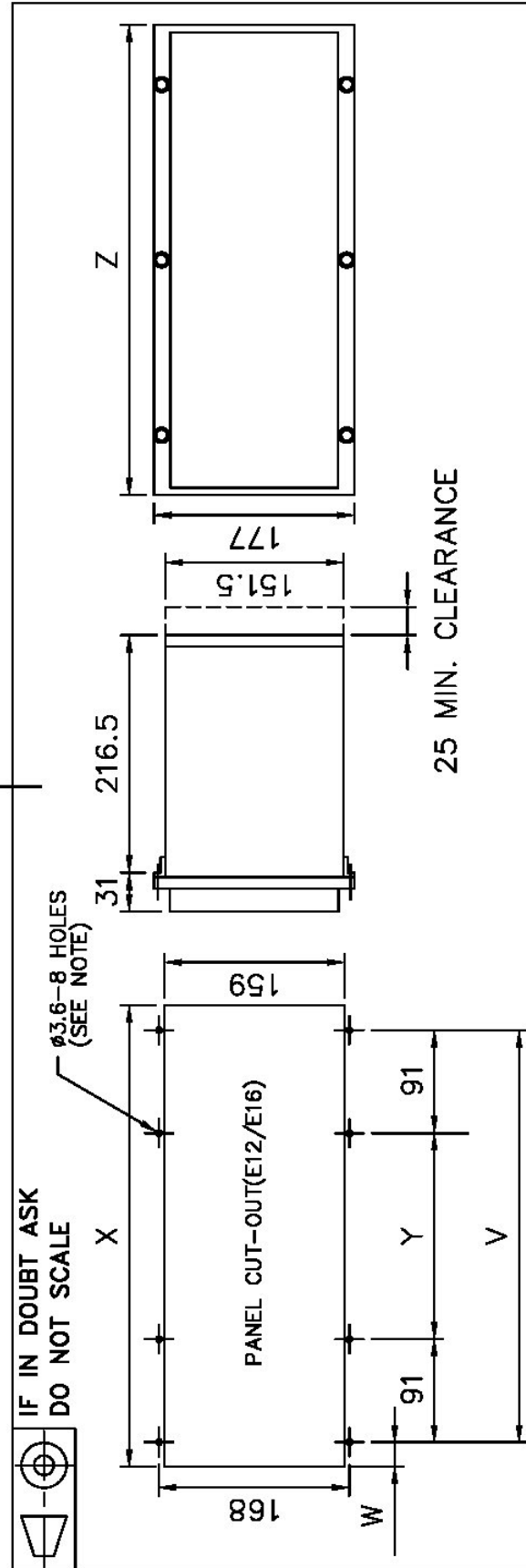
26/02/2003	2621H80002R9	
------------	--------------	--

The copyright and other intellectual property rights in this document, and in any model or article produced from it (and including any registered or unregistered design rights) are the property of Siemens Protection Devices Limited. No part of this document shall be reproduced or modified or stored in another form, in any data retrieval system, without the permission of Siemens Protection Devices Limited, nor shall any model or article be reproduced from this document unless Siemens Protection Devices Limited consent.

While the information and guidance given in this document is believed to be correct, no liability shall be accepted for any loss or damage caused by any error or omission, whether such error or omission is the result of negligence or any other cause. Any and all such liability is disclaimed.

## Figures

Figure 1 - Panel Fixing .....	3
Figure 2 - Rear Terminal View .....	4



**NOTE:**  
THE Ø3.6 HOLES ARE FOR M4 THREAD FORMING (TRILOBULAR) SCREWS. THESE ARE SUPPLIED AS STANDARD AND ARE SUITABLE FOR USE IN FERROUS/ALUMINIUM PANELS 1.6mm THICK AND ABOVE. FOR OTHER PANELS, HOLES TO BE M4 CLEARANCE (TYPICALLY Ø4.5) AND RELAYS MOUNTED USING M4 MACHINE SCREWS, NUTS AND LOCKWASHERS (SUPPLIED IN PANEL FIXING KIT).

E12 CASE	E16 CASE
V 286	V 364
W 9.25	W 21.75
X 304.5	X 407.5
Y 104	Y 182
Z 311.5	Z 415.5

**DRAWING OFFICE ONLY NOTE**  
ANY CHANGE TO THIS DRG MUST BE REFLECTED ON DRGS 2995X10012, 2995X10016, & CATALOGUE.

**NOT SUBJECT TO UPDATE  
ONCE COPIED / PRINTED  
OR DOWNLOADED**

**MATERIAL:**

Dimensions in millimetres : Surface texture in micrometres.  
Machine whirs marked ✓  
For explanation of dimensions, tolerances, notes etc. see B.S.308.  
Limit on untoleranced unmachined dimensions ±  
Limits on untoleranced machined dimensions to B.S.4500:  
i.e. up to 64±0.1; over 30 to 120±0.3; over 316±0.8;  
over 6 to 30±0.2; over 120 to 316±0.5;  
General unmachined angular tolerance ±

Copyright © 2001 Reyrolle Ltd.

1	26/7/01	CHANGE
ISSUE	DATE	NOTED
First used on:		
Similar Articles:		
Supersedes:		
Dwg.No.		
Original Scale:		
EAC		
EAC		
Purch. Spec.		
TO		
OPS.		
DATE: 11/07/02		
I.E.		
APPROVED: R.D.WATSON		
CHECKED:		
DRAWN: M LEASK		
A4h		

**OVERALL DIMENSIONS AND PANEL DRILLING FOR EPSILON E12 & E16 CASES**

**Reyrolle Protection Hebburn.**

**NTS**

**2995X10018**

Figure 1 - Panel Fixing

